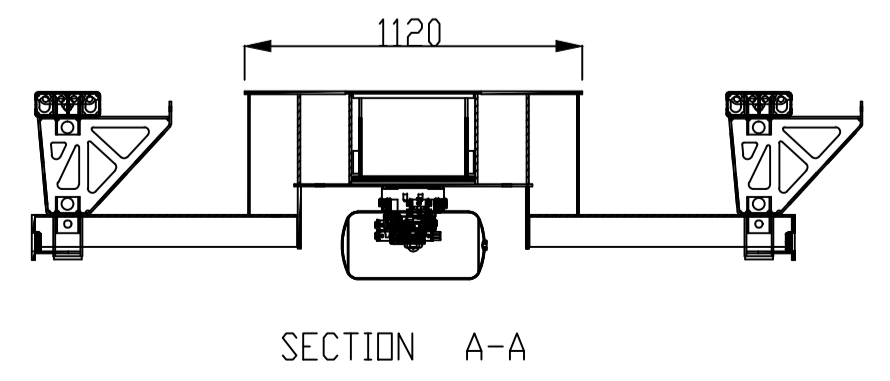
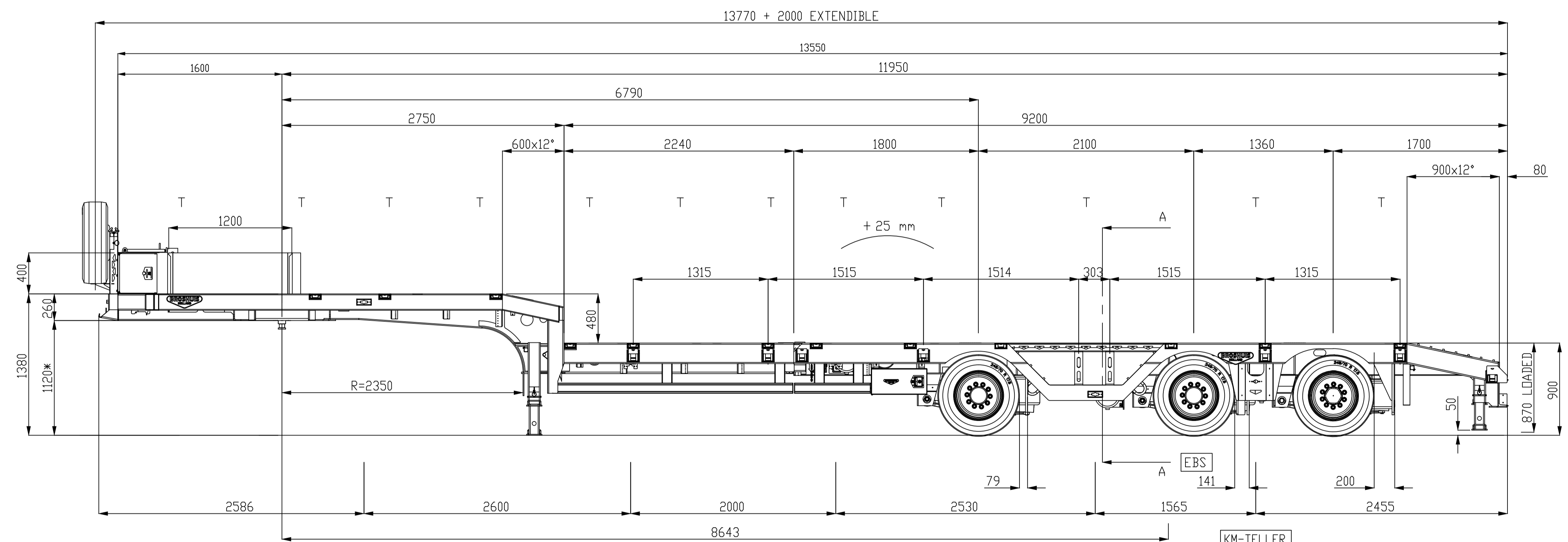
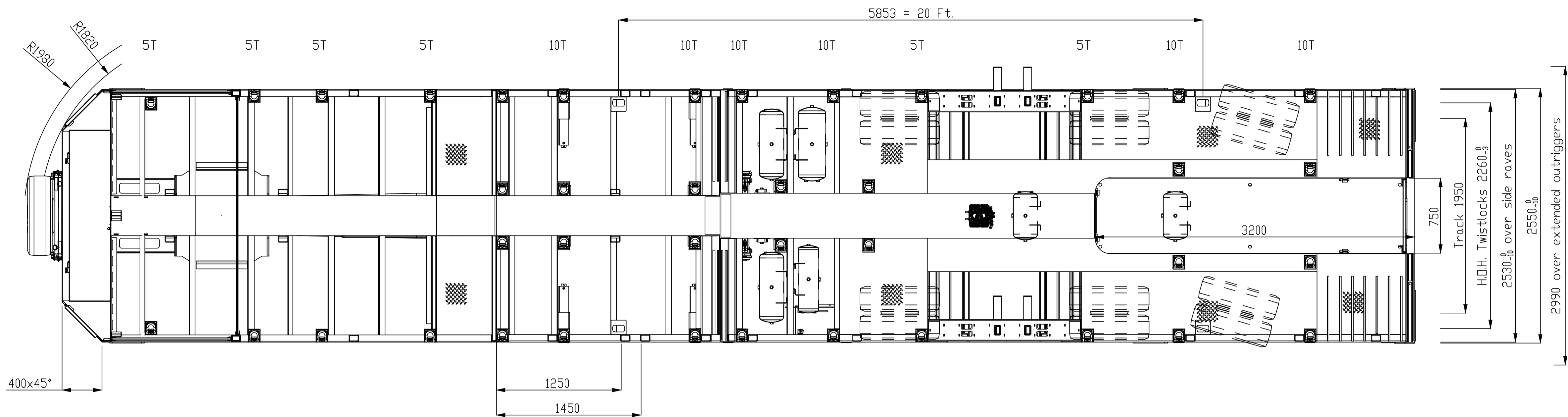


rev	date	engineer	remarks
A	6-1-2016	HvU	Wijziging 2 ok
-	-	-	-
-	-	-	-



index	qty	article number	title	material
15	1	82984152	A KOPSCHOT GEREEDSCHAPKIST H=400	
14	1	A0470622	A SLUITSCHOT KRAANARM UITSPARING	
13	1	A0456230	C ACHTERKALF GIEKSLEUF 750MM INW.	
12	1	A0452060	F LAADVLDER WIELKUIL	
11	1	A0447144	C BUKD MET AANLASDELEN	
10	1	A0446053	B VAST DEEL AFSCHUINING 80x80	
9	1	A0442833	A BIKO MET AANLASDELEN	
8	1	A0442787	A NEKADAPTIE UNP200	
7	1	A0429878	D NEK GESCHIKT VOOR STEEKSCHOT 1200	
6	4	A0276812	C PDDT STEUN WIELKUIL	
5	2	A0276800	C STEUN WIELKUIL	
4	2	A0272448	A VERBREDINGSBALK LIGHT AFSCHUINING 900X12°	
3	1	A0155422	D OPBOUW BLOKKEERPEN RANDPROFIEL UNP 200	
2	1	A0154213	E OPTIES NA DE DELING B=2530	
1	1	A0154166	D OPTIES VOOR DE DELING B=2530 FP=2240	

Inner beam	Suspension	Gigant TLRM 5042/12.1		
Extensions	Axles	Gigant 2xGKH2 105. 1x GNKH2 105	Side rave	(F) U 160 cl. (R) U 200 cl.
	Raise/lower	+85/-65	Stake pockets	96x66x6
	Tyres	245/70 R17.5 R=398	Deck	(F) 37 (R) 37 Wood; 8/10 checkpl.
	Fifth wheel load	18.000 (kg)	Weldings	K-13320
	Bogie load	30.000 (kg)	Drain holes	Ø13
		1250	Type vehicle	E-2190/27
	Client	Twan Bierings Transport BV	Chassis number	XNJ31N5G16L01359
	Gen. Tol. ISO 13920 AE, ISO 1101	Roughness ISO 1302, Welding K-13320	Break sharp edges:	r_{p15}^{15} r_{p45}^{45}
drawn by:	Heino van Unen	third angle	mass:	(for information purpose only)
date:	9-May-16	ID:	3-1-N-245-G-A-L	
preceded:	1601123 B	title:	3-AXLE SEMI LOW LOADER	
		units:	mm	
		scale:	1:25	
		sheet:	1-1	
		state:	Production	
		revision:	A	
		article Number:	1601359	

THIS DOCUMENT IS SUBJECT OF THE TECHNICAL PRODUCT MANAGEMENT SYSTEM. ALL RIGHTS RESERVED. REPRODUCTION OR DISCLOSURE TO THIRD PARTIES OF THIS DOCUMENT OR ANY PART THEREOF IS NOT PERMITTED, EXCEPT WITH THE PRIOR AND EXPRESS WRITTEN PERMISSION OF BROSHUIS BV.